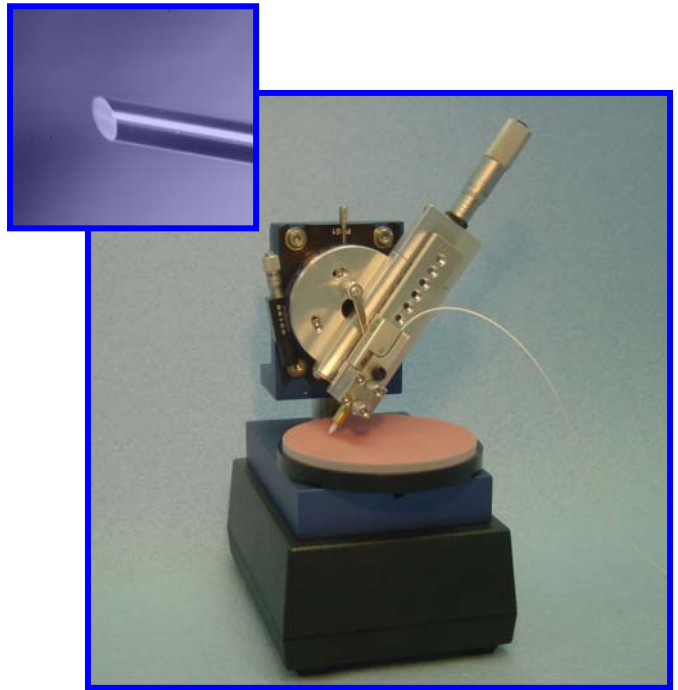


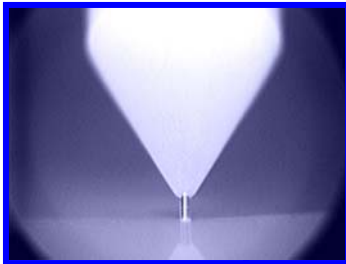


# Radian Bare Fiber Polisher

- COST-EFFECTIVE BARE FIBER POLISHING*
- VARIABLE ANGLE CONTROL*
- REAL-TIME VIDEO MONITORING*
- IN-LINE SURFACE INSPECTION*
- PM FIBER SUPPORT AND ALIGNMENT*
- ADAPTERS FOR VARIOUS FIBER TYPES*
- PRODUCTION AND R&D APPLICATIONS*



## SPECIFICATIONS AND FEATURES

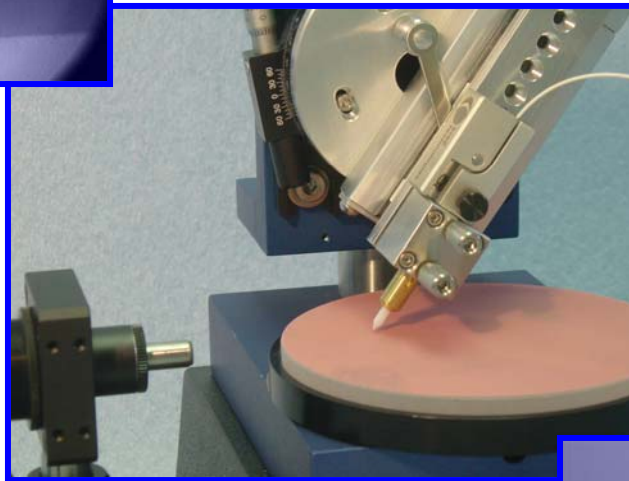


*Available video inspection module permits real-time monitoring of the fiber during the polishing process.*

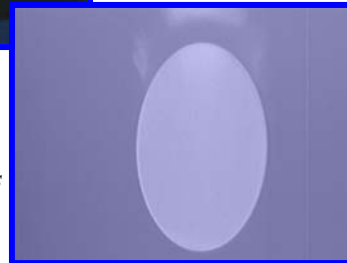
### Polishing Performance

- Angle Range<sup>1</sup>**  
0 (flat) to 25 degrees
- Angle Tolerance**  
+/- 0.5 degrees, typical
- Polishing Motion**  
Random Orbital
- Polishing Cycle Time**  
User adjustable
- Film Size**  
4 inch diameter

<sup>1</sup> Referenced off fiber diameter (i.e. 8° for APC style connector polish)



*The optional SpecVision™ video probe can be used in-line to verify polished surface quality while fibers are still loaded in the polisher.*



### Inspection Performance

- Real-Time Inspection**  
60X magnification
- In-Line Surface Inspection<sup>2</sup>**  
200X-400X magnification  
Coaxial illumination
- Video Signal**  
EIA/NTSC compatible
- Video Interface**  
BNC connectors

<sup>2</sup> magnification adjusted for fiber diameters

Specifications are subject to change without notice. Rev. 1, 01/08